



Tūī



Tūī

Tūī, named and designed after the native bird of Aotearoa/New Zealand. The Tūī bird features a necklace of interwoven feather rings that inspired the pendants woven canopy-like bell form.

Tūī comes in three sizes: small, medium, and large. The plywood finish can be either raw bamboo or painted, providing a variety of options.



Features

Shipped Kitset

Seed System kitset lightshades are on average 1/30th of the volume of the assembled light. This aims to help minimize the effects of shipping and to reduce the design's environmental footprint.

Warranty

This light is warranted for three years from date of purchase for failure of parts.

Care Instructions

All lights are intended for use in dry interior conditions only and can be cleaned with a soft cloth dampened slightly in warm water when the light is switched off. Do not use detergents.

EPD Certified

An EPD is a standardised and verified way of quantifying the environmental impacts of a product, based on a consistent set of rules that have been developed through a stakeholder consultation process.



Compliance



CE



AS/NZS

(Declarations of conformity available on request).





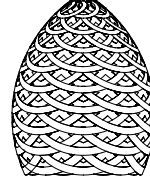
Technical Data



Small



Medium



Large

	Small	Medium	Large
Dimensions	Height: 500mm / 20" Width: 400mm / 16" Weight: 0.52kg / 1.15lb	Height: 680mm / 27" Width: 540mm / 21" Weight: 0.70kg / 1.55lb	Height: 950mm / 37" Width: 760mm / 30" Weight: 2.4kg / 5.30lb
Cordset*	2m / 6.5ft	2m / 6.5ft	3m / 9.8ft
Material	Bamboo plywood (Sourced from FSC accredited factory)	Bamboo plywood (Sourced from FSC accredited factory)	Bamboo plywood (Sourced from FSC accredited factory)
Fasteners	Nylon	Nylon	Nylon
Suspension	Hangs on cord	Hangs on cord	1 x Suspension
Packaging	393mm x 395mm x 45mm 16" x 16" x 2" 0.007m ³ / 0.25ft ³ 2.5kg / 5.5lb	485mm x 485mm x 680mm 19" x 19" x 2" 0.010m ³ / 0.36ft ³ 3.5kg / 7.7lb	585mm x 180mm x 200mm 23" x 7" x 9" 0.021m ³ / 0.74ft ³ 3.5kg / 7.7lb

Dimensions
Cordset*
Material
Fasteners
Suspension
Packaging

*Black comes with black cordset and fasteners. All others come with white cordset and white fasteners. Custom cordset lengths available on request.

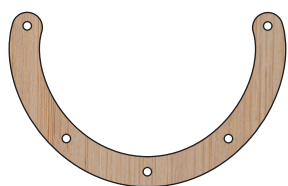
Finishes

We offer 12 stock finish options for Tūi. We use low VOC acrylic paint and it is most commonly used on the interior of the light. We can also produce lights in other finishes or colours by special order. All lights are made from sustainably grown bamboo plywood sourced from an FSC accredited factory.



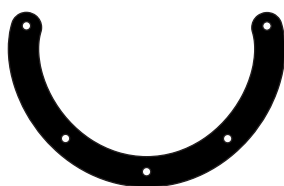
Raw Finish

Bamboo

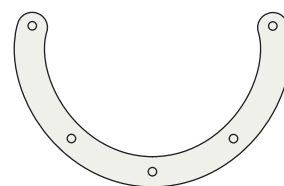


Painted 2 Sides

Black

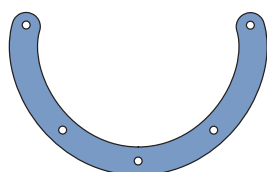


White

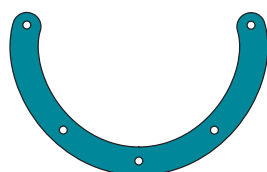


Painted 1 Side

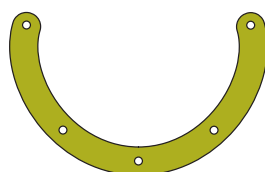
Blue



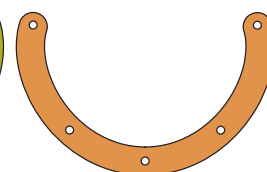
Aqua



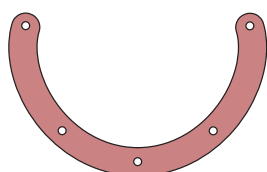
Lime



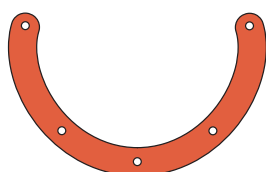
Orange



Pink



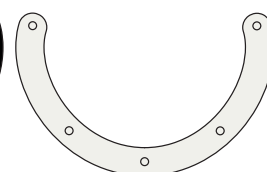
Red



Black



White





Bamboo



Aqua



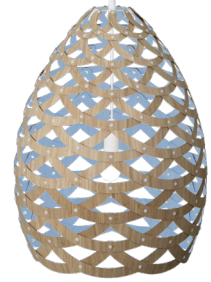
Lime



Red



Orange



Blue



Pink



Black 1 Side (Outside)



Black 1 Side (Inside)



Black 2 Sides



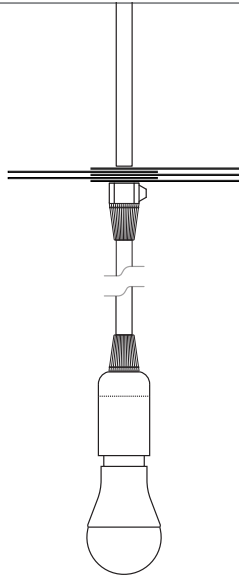
White 1 Side



White 2 Sides

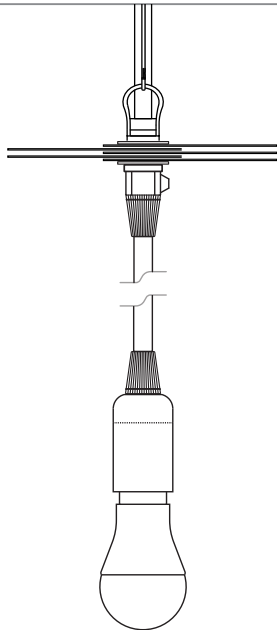
Electrics

**Small
Medium**



North America: E26,
Max 60 Watts 120v
AC 60hz
Rest of World: E27,
Max 60 Watts
230-240v AC 50hz

Large



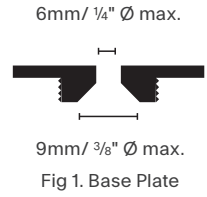
North America: E26,
Max 60 Watts 120v
AC 60hz
Rest of World: E27,
Max 60 Watts
230-240v AC 50hz

Installation

Large

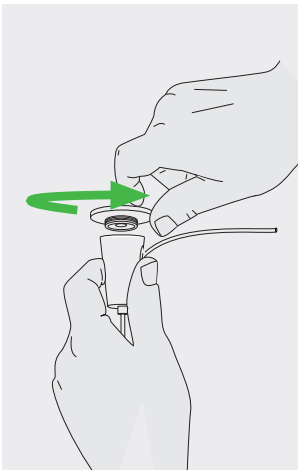
Fixings for cone gripper (fixing screws NOT SUPPLIED).

Note: Choose appropriate hardware to attach base plate (Fig.1) to ceiling substrate.



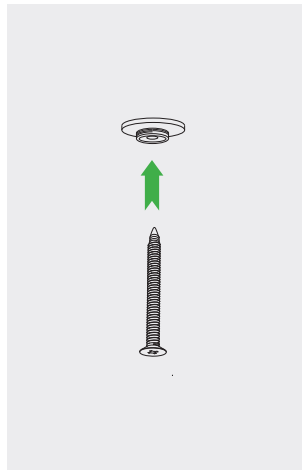
Step 1.

Follow the order of each component in diagram. Adjust the bulb / lamp to mid way in the pendant lightshade shown in Step 2 and then tighten.



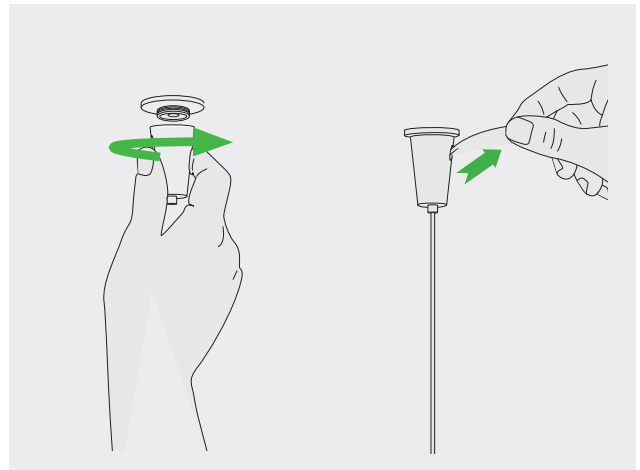
Step 2.

Unscrew baseplate.



Step 3.

Use appropriate fixing screw to mount base plate (Fig.1).



Step 4.

Remove cable from cone. Screw cone back onto baseplate. Re-insert cable and level light. Once desired position is set, trim excess cable.

) david
trubridge

davidtrubridge.com

David Trubridge Studio
Hawke's Bay, New Zealand
info@davidtrubridge.com
+64 6 650 0204

Certified

