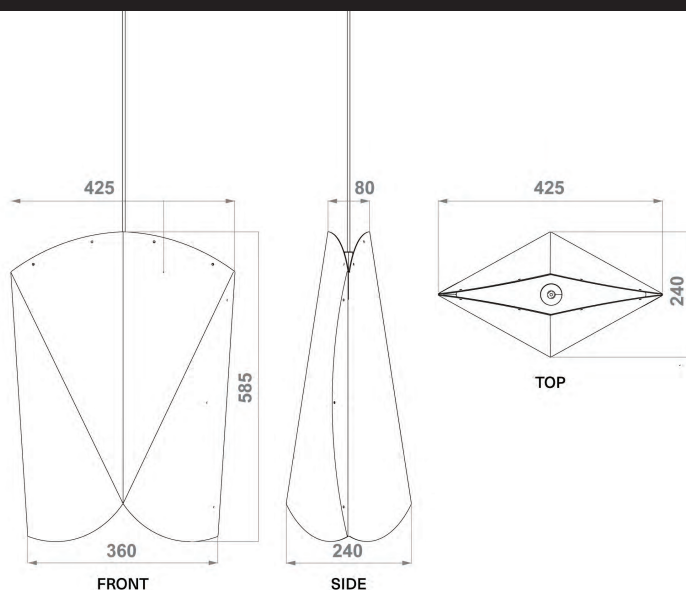


## Toki-Wide



The Wide Toki Light delivers even, direct lighting, making it a versatile choice for residential or commercial spaces. Its broad form casts a generous glow, perfect for creating a welcoming atmosphere

### Box Content



Shade



Lamp holder



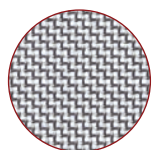
Ceiling rose with suspension wire



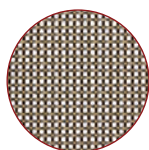
3-Core textile cord, 2.5m

<b>Material</b>	<b>WOVENPANEL®</b> Mild Steel, electroplated finish
<b>Lighting Type</b>	Direct and even illumination
<b>Applications</b>	Residential dining rooms, reception areas or retail spaces
<b>Key Features</b>	Wide-reaching light, clean aesthetic, and durable material
<b>Warranty</b>	2-Year Warranty

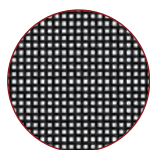
### Colours



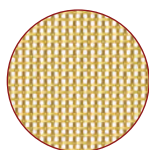
Stainless Steel



Antique Brass

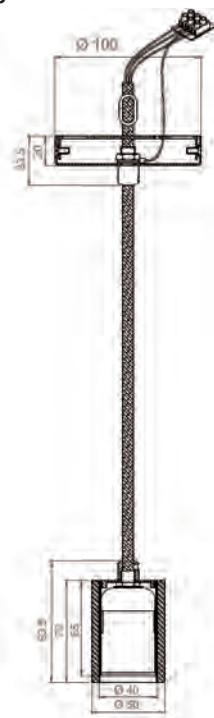


Black



Brass

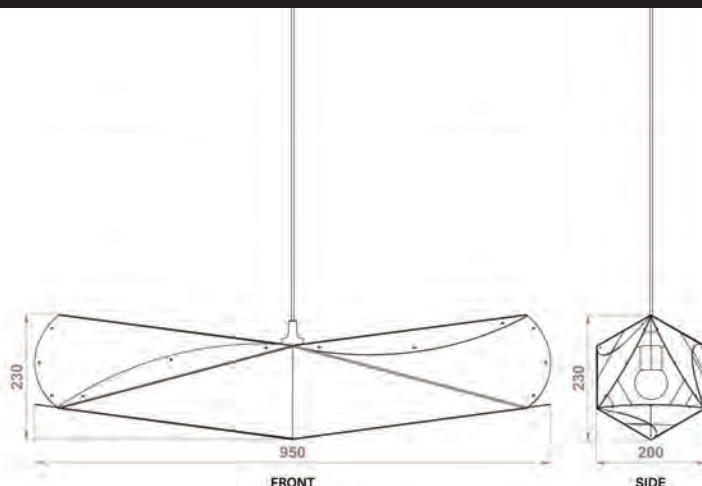
### Fitting



PENDANT

- E27 Screw in lamp holder - 60w max
- Must be installed by a registered electrician
- 3-Core textile cord, 2.5m can be cut to length
- Fitting color, Black
- Comes fully assembled
- Needs fitting to shade on install
- Comes with suspension wire for additional support
- AS/NZS Compliant
- Must be installed by a registered electrician
- SDOC available

# Toki-Horizontal



The Horizontal Toki Light offers a dramatic, decorative presence. Perfect for larger spaces, this design stretches across the room with its elongated form and striking visual impact. Its sculptural aesthetic and subtle play of light make it an ideal choice for dining areas, lounges, or commercial settings.

## Box Content



Shade




Lamp holder



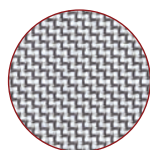
Ceiling rose with suspension wire



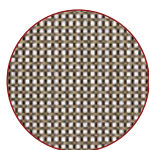
3-Core textile cord, 2.5m

<b>Material</b>	 <b>WOVENPANEL®</b> Mild Steel, electroplated finish
<b>Lighting Type</b>	Ambient and decorative
<b>Applications</b>	Larger rooms, statement lighting in residential or commercial space
<b>Key Features</b>	Sculptural form, clean lines, and lightweight design
<b>Warranty</b>	2-Year Warranty

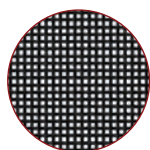
## Colours



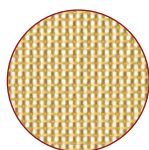
Stainless Steel



Antique Brass

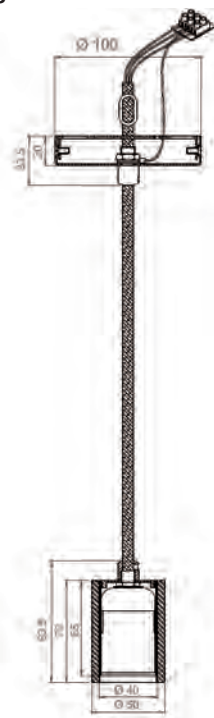


Black



Brass

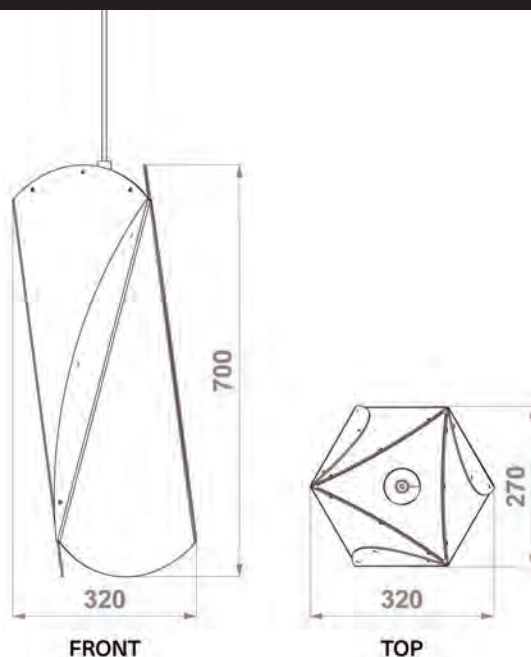
## Fitting



PENDANT

- E27 Screw in lamp holder - 60w max
- Must be installed by a registered electrician
- 3-Core textile cord, 2.5m can be cut to length
- Fitting color, Black
- Comes fully assembled
- Needs fitting to shade on install
- Comes with suspension wire for additional support
- AS/NZS Compliant
- Must be installed by a registered electrician
- SDOC available

# Toki-Large



For larger tasks or statement lighting, the Large Toki Light combines functionality with elegance. Its tall, slender form suits open-plan kitchens, dining tables, or commercial applications where impactful lighting is needed.

## Box Content



Shade



Lamp holder



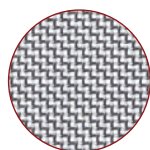
Ceiling rose with suspension wire



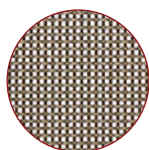
3-Core textile cord, 2.5m

<b>Material</b>	<b>WOVENPANEL®</b> Mild Steel, electroplated finish
<b>Lighting Type</b>	Direct and ambient
<b>Applications</b>	Open-plan kitchens, dining areas, or commercial settings
<b>Key Features</b>	Versatile functionality, striking vertical form, and impactful lighting design
<b>Warranty</b>	2-Year Warranty

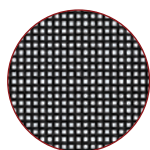
## Colours



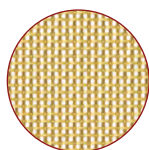
Stainless Steel



Antique Brass



Black



Brass

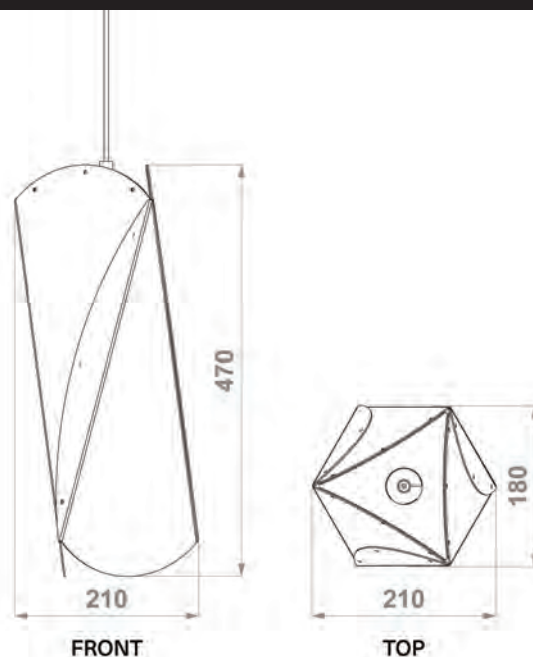
## Fitting



PENDANT

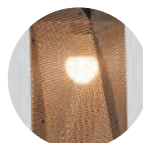
- E27 Screw in lamp holder - 60w max
- Must be installed by a registered electrician
- 3-Core textile cord, 2.5m can be cut to length
- Fitting color, Black
- Comes fully assembled
- Needs fitting to shade on install
- Comes with suspension wire for additional support
- AS/NZS Compliant
- Must be installed by a registered electrician
- SDOC available

# Toki-Small



The Small Toki Light brings focused illumination with a compact, refined design. Its clean, vertical structure is perfect for hanging above kitchen islands, workspaces, or as an accent light in smaller spaces.

## Box Content



Shade




Lamp holder



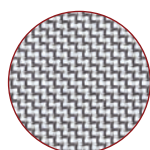
Ceiling rose with suspension wire



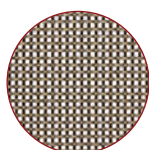
3-Core textile cord, 2.5m

<b>Material</b>	 <b>WOVENPANEL®</b> Mild Steel, electroplated finish
<b>Lighting Type</b>	Direct and focused
<b>Applications</b>	Kitchen islands, task lighting, or smaller residential & commercial spaces
<b>Key Features</b>	Space-saving design, easy assembly and precision lighting
<b>Warranty</b>	2-Year Warranty

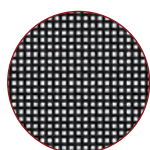
## Colours



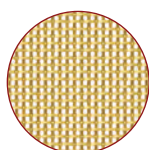
Stainless Steel



Antique Brass



Black



Brass

## Fitting



PENDANT

- E27 Screw in lamp holder - 60w max
- Must be installed by a registered electrician
- 3-Core textile cord, 2.5m can be cut to length
- Fitting color, Black
- Comes fully assembled
- Needs fitting to shade on install
- Comes with suspension wire for additional support
- AS/NZS Compliant
- Must be installed by a registered electrician
- SDOC available